

PRODUCT CATALOGUE 2024





BikeBaju - Perstorp Cycling Team

Perstorp a leading waste bin company, has teamed up with BikeBaju , a renowned cycling apparel brand, to sponsor a new cycling team.

As two companies committed to innovation and sustainability, we are thrilled to support a team that shares our values and represents our brands. Cycling is not only an excellent way to promote a healthy lifestyle, but also an environmentally-friendly mode of transportation. By sponsoring this team, we hope to encourage more people to take up cycling and reduce their carbon footprint.

We believe that the combination of Perstorp's expertise in waste management and BikeBaju's knowledge in cycling apparel will create a powerful partnership. Together, we are confident that we can provide the team with the best equipment and support, helping them achieve their goals and perform at their best.

We are looking forward to seeing the team in action and are proud to be part of their journey towards success. This partnership demonstrates our commitment to promoting health, sustainability, and teamwork, and we cannot wait to see the positive impact we can make together.

Index

03

Wheel Bins



12

Recycling Bins



30

Litter Bins & Room Bins



49

Stainless Steel Bins



60

Medical Waste Bins



72

Queue Up Stands & Misc



82

Leach Bins & RORO



Perstorp

Wheel Bins

Perstorp's wheel bins are designed to have a sleek look and be ergonomically efficient. Manufactured using injection moulding technology and high density polyethylene (HDPE). The bins are designed with durability in mind.

Designed to facilitate optimal stacking and enhance logistics, thus helping reduce CO2 emissions during transportation. Manufactured under the highest international quality standards in each field of activity (DIN, EN-840).

Available in a wide range of colours, we offer a complete series of accessories in order to cover any issue that may arise during waste collection. These parts can be easily installed by the user.

All the wheel bins can be customised with a series of options in order to enhance the tracking, identification and logistics by the waste collectors.





MGB120-SL

Width	470
Length	550
Height	940
Weight (kg)	8 ±2%
Max Load (kg)	48
Volume (litres)	120



MGB240-SL

Width	570
Length	740
Height	1070
Weight (kg)	11 ±2%
Max Load (kg)	95
Volume (litres)	240



MGB360

Width	770
Length	1370
Height	1180
Weight (kg)	40 ±2%
Max Load (kg)	300
Volume (litres)	660

Product Feature

- International Standard (Certified according to EN 840)
- Interior & exterior surface by hygienic design
- High resistance to UV radiation
-
- Smoothly designed interior ensures optimum emptying
- Edge prevents rainwater from penetrating
- Deeper combs ensure optimum accommodation by the lifting device
- Various colour choices

Wheels

- Solid rubber tires
- Diameter: 200mm
- High stability
- Efficient corrosion protection

Specification

- Material : HDPE
- Dimension (unit : mm)
- Hub: Injection moulded Polyethylene
- Tyre: Vulcanised rubber
- Axle: Galvanised Steel
-

Customisation

- Company logos (thermal printed or sticker)
- QR Codes
- Serial numbers
- Locks





4 - Wheel Bins



Product Feature

- International Standard (Certified according to EN 840)
- Interior & exterior surface by hygienic design
- High resistance to UV radiation
- Highly durable - 30 degrees and up to 80 degrees
- Smoothly designed interior ensures optimum emptying
- Edge prevents rainwater from penetrating
- Deeper combs ensure optimum accommodation by the lifting device
- Standard colour: Green

Wheels

- Solid rubber tires
- Diameter: 200mm
- Wheel rotation of 360 degrees
- Wheel foot breaking system (2 units)
- High stability
- Efficient corrosion protection

Specification

- Material : HDPE
- Dimension (unit : mm)
- Hub: Injection moulded Polyethylene
- Tyre: Vulcanised rubber
- Axle: Galvanised Steel

Customisation

- Company logos (thermal printed or sticker)
- QR Codes
- Serial numbers
- Locks



MGB660-PRO

Width	770
Length	1380
Height	1185
Weight (kg)	40 ±2%
Max Load (kg)	310
Volume (litres)	660



MGB660-SL

Width	740
Length	1370
Height	1235
Weight (kg)	40 ±2%
Max Load (kg)	300
Volume (litres)	660



MGB1100-PRO

Width	1085
Length	1240
Height	1360
Weight (kg)	50 ±2%
Max Load (kg)	440
Volume (litres)	1100



MGB1100-SL

Width	990
Length	1350
Height	1325
Weight (kg)	48 ±2%
Max Load (kg)	440
Volume (litres)	1100



MGB660-SLP

The MGB660-SLP is a 660 litre wheel bin equipped with a durable metal foot pedal. This is to ease the disposal of wastes and ensures efficiency by the cleaners. The lid also closes softly which reduces noise.

Width	740
Length	1370
Height	1235
Weight (kg)	40 ±2%
Max Load (kg)	300
Volume (litres)	660



MGB120-P



MGB240-P



Perstorp

Recycling Bins

Perstorp's recycle bins are made to stand out. To be seen in public spaces to ensure efficient recycle waste collection is done right. These bins are made to withstand high temperatures and harsh UV lights.

We specialise in customising recycling bins so that the bins will reflect the interior decor of our customers. Also to make the bins more attractive and playful. Perfect for any shopping mall, condominiums, hotels, schools, sports facilities, restaurants and even public spaces.

The litter bins are manufactured with the least number of parts to facilitate assembly. **Perstorp's** recycle bins comes in a wide range of design and can be customised in various colours to suit each customers needs.



RSB Series



These recycle bins are tough and durable, will not crack or dent and is easy to clean. Custom design, graphics and logos are available upon request. Contact our sales team to find out how to personalise these bins.

RSB4080

400(D) x 850(H)mm
94L

RSB4090

400(D) x 965(H)mm
106L



H
Bag holder



L1
DP liner



L
Metal liner



A variation of the RSB4080/4090 Design

**RDP3590**

340(L) x 340 (W) x 900 (H)mm
88L

**PCY120-R/PCY50-R**

510(L) x 510(W) x 980 (H)mm
120L
380(L)x380(W)x790(H)mm
50L

**RDP3380 - Wood Finish**

330(L)x 225(W) x 800(H) mm
60L

**RSB64100**

640 (L) x 300 (W) x 1000 (H) mm
190L

**PTF75-R**

380(L) x 245 (W) x 745 (H) mm
75L

**RDP3380**

330(L)x 225(W) x 800(H) mm
60L

**RDP54100**

540(L)x 540(W) x 1000(H) mm
200L

**PSH80-R**

360(L) x 360 (W) x 790 (H) mm
80L



**R2630-Trio with
Custom Labels at
The Westin Hotel, Kuala Lumpur**



R2620-Duo
790 (L) x 400 (W) x 800 (H) mm
200L



R2630-Trio
1180 (L) x 400 (W) x 800 (H) mm
300L



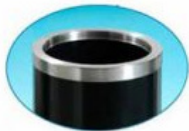
R2640-Quattro
1580 (L) x 400 (W) x 800 (H) mm
300L

MetalPlas Recycling Bins

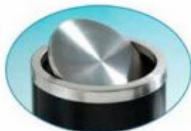
Perstorp's MetalPlas bins are made using durable polyethylene that will not rust, dent or crack easily. Paired with elegant stainless steel cover, this gives the bins a classy look. Suitable for both indoor and outdoor.

A wide range of colour choices are available. Comes also in special wood finish for that presitine look.

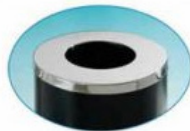
The bins can be customised with logos and various types of cover options



Rim Cover



Swing Cover



Top Opening

106L

Default :



H
Bag Holder

Optional :



D
Stainless steel
decorative band



L
Metal liner



L1
DP liner

RMP4080

400(D) x 850(H)mm
94L

RMP 4090

400(D) x 965(H)mm
106L

RMP4091



RMP 4091
400(D) x 965(H)mm
68L



FY1
Front slot opening
250 x 50 mm



FY3
Front slot opening
250 x 150 mm



FY4
Front round opening
140 mm



FY5
Front slot opening
200 x 200 mm



MGB120-R Recycling Bin Set

550(L) x 470(W) x 940 (H) mm
120L



PTL60-B Recycling Bins

410 (L) x 410 (W) x 700 (H) mm,
60L

MGB240-R Recycling Bin Set

715(L) x 570(W) x 1070 (H) mm
240L

*Multiple colour and graphic options are available for MGB120 and MGB240 Recycling sets

MGB660-R Recycling Bin Set

1370(L) x 770(W) x 1180 (H)mm

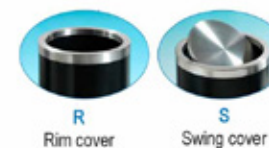


**RSB610**

610(L)x 365(W) x 1020 (H) mm



2-1 Slot Opening options is available

**PJS40-R**300 (Ø) x 700 (H) mm
40L**PJS22-R**245 (Ø) x 600 (H) mm
22L**PLK68-R**400(D) x 830(H) mm
68L



PLB150-R Recycling Bin Set
Ground mounted in Putrajaya Park



PSW50-R
380(L) x 380 (W) x 820(H) mm



PJS75-R
350 (D) x 850(H) mm
*Rim Top is available





RMP3580-R
355 (L) x 355 (W) x 770 (H) mm
88L



RSB5080
500 (L) x 360 (W) x 800 (H) mm
90L



RSB3470
360 (L) x 265 (W) x 850 (H) mm
60L



RDP3391
330 (L) x 255 (W) x 900 (H) mm
60L

Stainless Steel Recycling Bins

**RNB109-2**

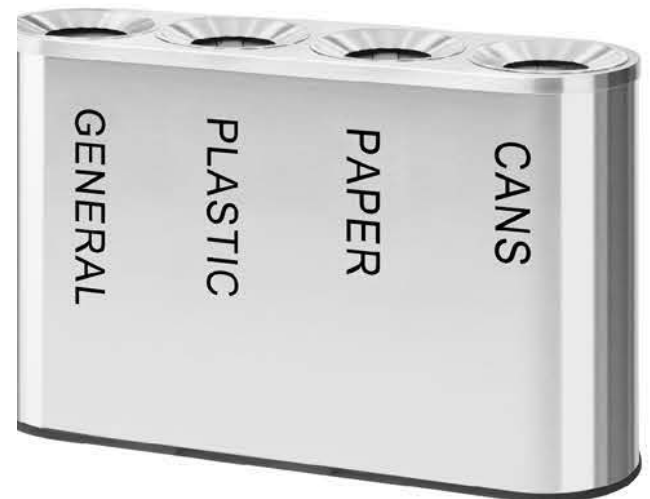
610(L) x 360 (W) x 760 (H) mm

**RNB109-3**

910 (L) x 360 (W) x 760 (H) mm

**RNB109-4**

1200 (L) x 360 (W) x 760 (H) mm





RSS1200-Trio

Colour and text can be customised accordingly.



RSS600-Trio

750(L) x 380 (W) x 840 (H) mm



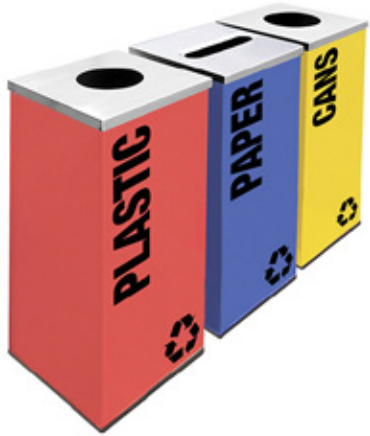
RSS1001-Trio

300(L) x 300 (W) x 740 (H) mm



RSS1002-Trio

300(L) x 300 (W) x 740 (H) mm



RSS1003-Trio
300(L) x 300 (W) x 740 (H) mm



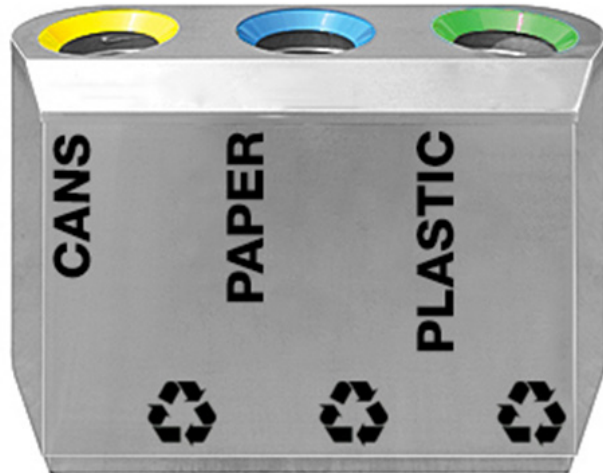
RSS1004-Trio
380(L) x 230 (W) x 740 (H) mm



RSS1005-Trio
380(L) x 230 (W) x 740 (H) mm



RSS1006-Trio
380(L) x 230 (W) x 740 (H) mm



RSS1303-Trio
1140 (L) x 415 (W) x 800 (H) mm



RSS129
390(D) x 760 (H) mm



RSS1102P-Trio
500 (L) x 500 (W) x 850 (H) m



RSS1303-Duo
760 (L) x 415 (W) x 800 (H) mm



RSS1038-Duo
760 (L) x 380 (W) x 800 (H) mm



RSS1020-Quattro
1520(L) x 380(W) x 800 (H) mm



RSS403-S
380(L) x 230 (W) x 750 (H) mm
31L

Recycling Cages

These recycled cages have been designed according the proposal made by the Malaysian government. They are a low cost solution for large recyclable waste collection in high density or high rise buildings. Made from steel these cages are robust and weather resistant.



Various sizes are available to choose from, speak to our sales team to find out more.

Perstorp

Litter Bins

Perstorp's litter bins are designed to incorporate the surroundings of a city or parks and to ensure efficient waste collection. These bins are made to withstand high temperatures and harsh UV lights.

Manufactured with the highest quality standards in polyethylene, steel or cast aluminium. They provide functional and design solutions, for the selective collection of different types of wastes.

The litter bins are manufactured with the least number of parts to facilitate assembly. **Perstorp's** litter bins comes in a wide range of design and can be customised in various colours to suit each customers needs.



Street Bins



PCY120
510(L) x 510(W) 980 (H) mm
120L
PCY50
380(L) x 380(W) 790 (H) mm
50L



SB86
500(D) x 970(H) mm
86L



PKL90
450(D)x1000(H) mm
90L



PMJ85
550(D) x 1060(H) mm
120L



PLB150
620(D) x 930(H)mm
120L



PMA85
400(D) x 1050(H)mm
85L



SB151
600(D) x 972(H)mm
150L



PDH120
610(D) x 500 (D) x1000(H) mm
150L

**D55101**

540(L) x 540 (W) x 1000 (H) mm
135L

**EWB120**

600(W) x 600(L) x 1325(H) mm
120L
- Made to MGB120 Wheel Bin

**PML120**

460(W) x 460(L) x 975(H) mm
120L

**SB4091**

400Dx 965(H) mm
70L

**PNA95**

480(D) x 1020(H) mm
95L

**PRM150**

575(D)1000(H) mm
150L

**SB150**

620(D) x 1020(H) mm
150L

**SB64101**

640(L) x 300 (L) 1000(H) mm
160L

Accessories & Options



F
Flat top



A
Ashtray



L1
DP liner



L
Metal liner



H
Bag holder

Colour Options



BLK



RED



DBL



YEL



PUR



LBL



LGR



GRY



ORG



DGR



PMA85

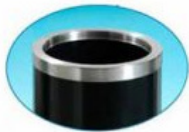
With custom logo and wording
made for Majlis Bandaraya Ipoh
(Ipoh City Council)

MetalPlas Bins

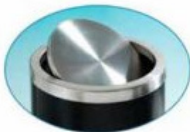
Perstorp's MetalPlas bins are made using durable polyethylene that will not rust, dent or crack easily. Paired with elegant stainless steel cover, this gives the bins a classy look. Suitable for both indoor and outdoor.

A wide range of colour choices are available in both marble and ceramic finishes. Comes also in special wood finish for that presitine look.

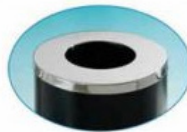
The bins can be customised with logos and various types of cover options.



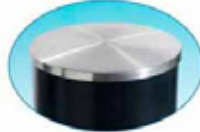
Rim Cover



Swing Cover



Top Opening



Flat Top

Default :



H
Bag Holder

Optional :



D
Stainless steel
decorative band



L
Metal liner



L1
DP liner



MP4090
400(D) x 965(H) mm
106L



MP4080
400(D) x 850(H) mm
94L



MP3580
340(L)x 340(W) x850 (H) mm
94L



MP3471
340(L)x 260(W) x750 (H) mm
41L



MP5190
500(D)x x965 (H) mm
150L



MP2980
295(D) x 800(H) mm
40L



MP4081
400(D) x 850(H) mm
56L



MP3470
340(L)x 260(W) x850 (H) mm
94L



MP3581
340(L)x 340(W) x820 (H) mm
48L



MP4091
400(D) x 965(H) mm
68L

MetalPlas Wood Vinyl Series



MPW2980
295(D) x 800(H) mm
40L



MPW4080
400(D) x 850(H) mm
94L



MPW4090
400(D) x 965(H) mm
106L



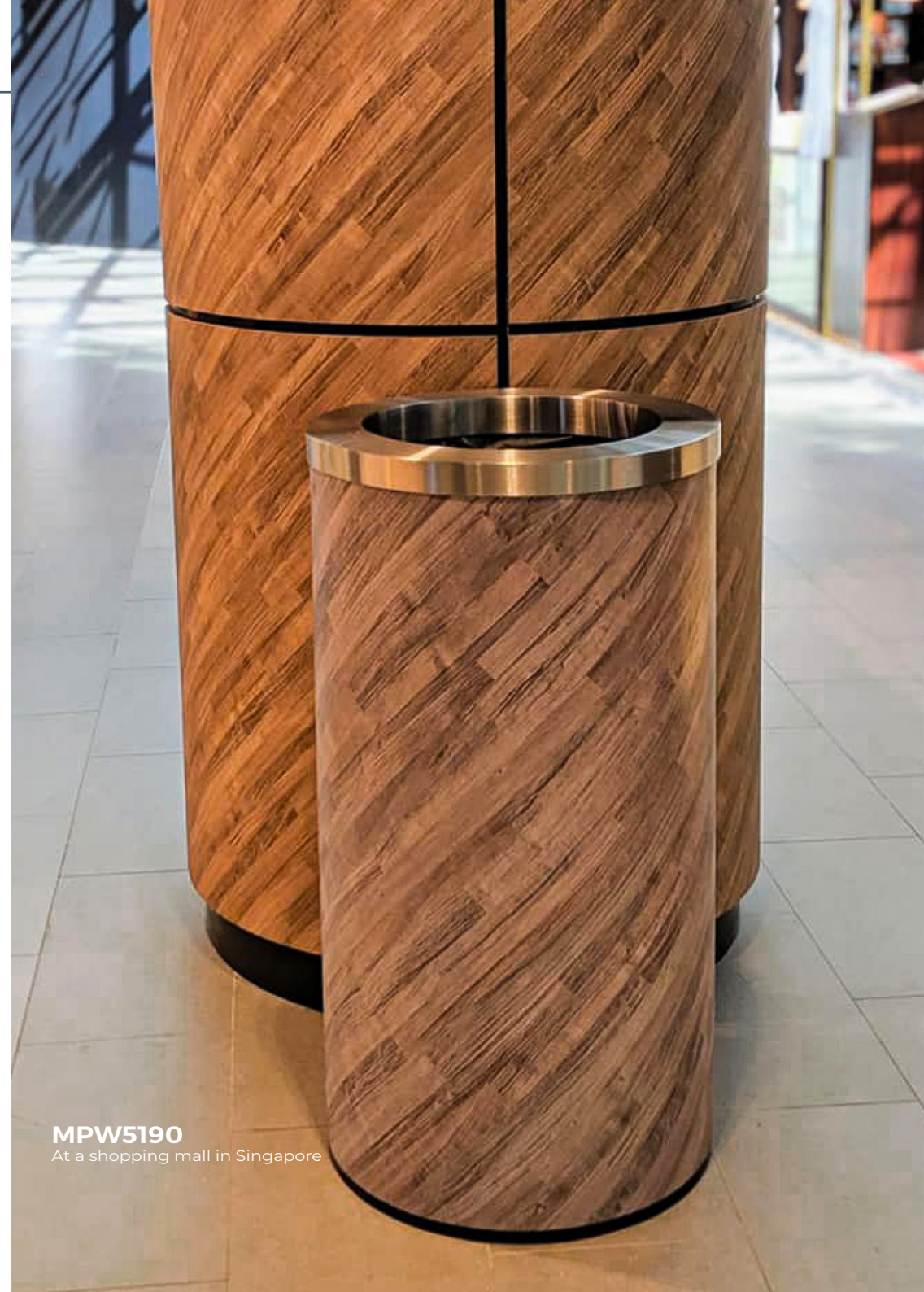
MPW3370
340(L)x 260(W) x750 (H) mm
41L



MPW3580
340(L)x 340(W) x850 (H) mm
94L



MPW5190
500(D)x x965 (H) mm
150L



MPW5190
At a shopping mall in Singapore

Colour Options

Standard



Black
(BL1)



LI Grey
(LY1)



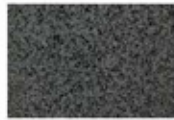
Brown
(BN1)



Heritage Green
(HG1)



Dk Grey
(DY1)



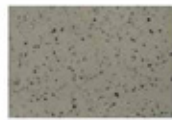
Ceramic Dk Grey
(CDY102)



Marble Beige
(MBE104)



Marble Black
(MBL117)



Marble White
(MWH86)

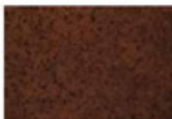


Ivory
(IV1)

Special Colours



Ceramic Beige 2
(CBE2)



Ceramic Brown 2
(CBN2)



Ceramic Maroon 2
(CMA2)



Marble Brown
(MBN128)



Marble Green
(MGE116)

Wood Vinyls



WK72



WK929



WK47



WK25



WK62



WK43



WK55



WK33



WK21



WK178



WK1352



WKJ01



WK5008



WK043

Artificial Wood Bins



PWD245

400(D) x 755(H) mm
60L



PWD246

400(L) x 400 (W) x 950(H) mm
70L



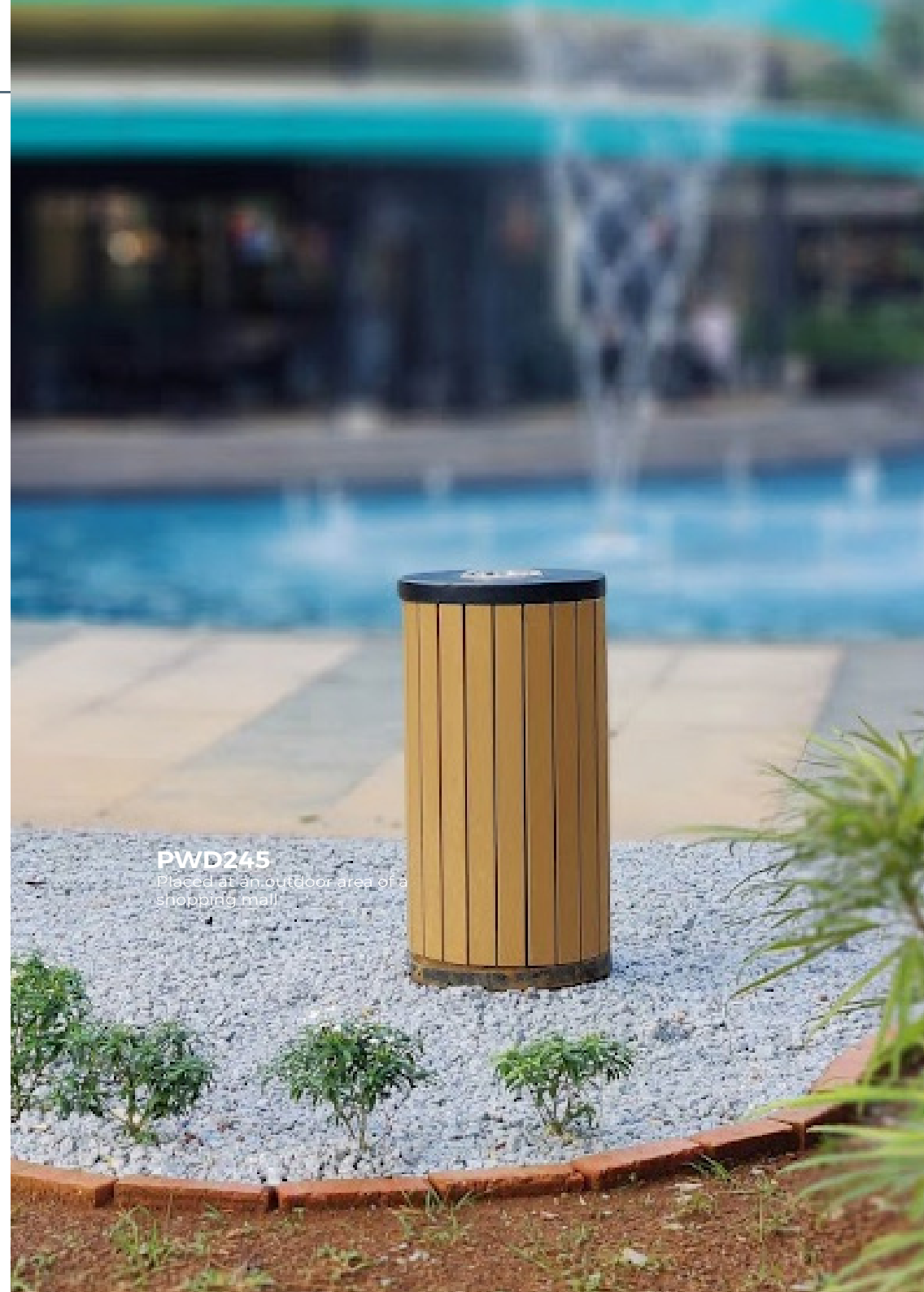
PWD247

355(L) x 355 (W) x 810(H) mm
70L



PWD248

400(D) x 935(H) mm
60L



PWD245

Placed at an outdoor area of a shopping mall

General Bins



PJD45
495(L) x 250(W) x 730(H)
45L



PSW50
495(L) x 250(W) x 730(H)
50L



PTF75
360(L) x 265(W) x 850 (H) mm
75L



PJS75-S
340(L) x 260(W) x 750 (H) mm
75L



PST39
405(L) x 295(W) x 655 (H) mm
39L
PST26
380(L) x 278(W) x 515 (H) mm
26L



PLK68
400(D) x 830(H) mm
68L
*Top Opening option is available



RB90
520(D) x 828 (H) mm
90L
RB70
480(D) x 670 (H) mm
70L



PTL100B
470 (L) x 470 (W) x 870 (H) mm
100L
PTL60B
413 (L) x 413 (W) x 796 (H) mm
60L



PZR45
440(L) x 200 (W) x 720mm
45L



PCM60
330(L) x 245 (W) x 790mm
60L



PSW120
485(L) x 485 (L) 970 (H) mm
120L



CKD120
485(L) x 485 (L) 970 (H) mm
120L



SB5080
500(L) x 300 (L) 800 (H) mm
90L

Colour Options



PJS75
350(D) x 780(H) mm
75L

PJS40
300(D) x 700(H) mm
40L

PJS22
245(D) x 600(H) mm
22L



SB3470
340(L) x 260 (L) 7500 (H) mm
60L

Hanging Bins



PHH28
400(L) x 280 (W) x 700(H) mm
28L



PHH20
365(L) x 240(W) x 665 (H) mm
20L
*Wall mounted only model



PSK40
390(L) x 370(W) x 700 (H) mm
40L

- Metal pole is included for all hanging bin models*
- Flap Doors are available for all models
- Various colour choices are available



PJR55
420 (L) x 330 (W) x 765 (H)mm
55L



PHH42
420(L) x 310 (W) x 850(H) mm
42L



PDF28
400(L) x 230(W) x 600 (H) mm
28L

Colour Options



BLK



RED



DBL



YEL



PUR



LBL



LGR



GRY



ORG



DGR

Chute Bins

**RCB-95**

500mm x 410mm x 600mm (H)
95L

RCB-120

470mm x 520mm x 660mm (H)
120L

RCB-150

600mm x 600mm x 650mm (H)
150L

RCB-200

640mm x 640mm x 700mm (H)
200L

RCB-250

690mm x 690mm x 740mm (H)
250L

Apartment buildings, condominiums and flats occasionally have rubbish chutes for the residents to dispose of their rubbish waste. The chutes lead down to a chute bins that is normally located on the lowest level.

Our chute bins comes in various sizes to accommodate the various needs of high rise buildings.



Castor Wheel options area available.

Room Bins & Pedal Bins

Kitchen, bathroom, workspace. Different areas of our home need different waste paper bins and baskets. We have a wide range to make choosing easy, including bins that will come in handy when you're sorting things out for recyclable wastes.





PSO30

410(L) x 398(W) x 435(H) mm
30L

PSO45

398 (L) x 410 (W) x 600 (H) mm
45L

PSO68

412 (L) x 504 (W) x 673 (H) mm
68L

PSO87

500(L) x 410(W) x 820(H) mm
87L



EK9366-35

356 (L) x 336 (W) x 638 (H) mm
35L

EK9366-50

416 (L) x 376 (W) x 692 (H) mm
50L



EK 9218-6L

235 x 230 x 318 mm
6L

EK 9218-10L

296 x 260 x 450 mm
10L

EK 9218-18L

336 x 298 x 524 mm
18L

EK 9218-30L

375 x 340 x 690 mm
30L

EK 9218-50L

455 x 405 x 705 mm
50L



SP10

330 (D) x 315 (H) mm
10L

SP18

395(D) x 420 (H) mm
18L

Colour options





GTC-SR8

230 (D) x 395 (H) mm
8L

GTC-SR12

245(D) x 395(H) mm
12L



EK 9088MT-6L

210mm(W) x 210mm(D) x 315mm(H)
6 L

EK 9088MT-9L

240mm(W) x 240mm(D) x 340mm(H)
9 L

EK 9088MT-12L

240mm(W) x 240mm(D) x 430mm(H)
12 L

EK 9088MT-28L

305mm(W) x 305mm(D) x 570mm(H)
28 L

EK 9088MT-35L

305mm(W) x 305mm(D) x 692mm(H)
35 L



EK 9278-20L

250 x 375 x 440mm
20L

EK 9278-30L

250 x 375 x 624 mm
30L

EK 9278-45L

270 x 460 x 655 mm
45L



EK 9285MT-9L

250mm(D) x 345mm(H)
9 L

EK 9285MT-12L

250mm(D) x 427mm(H)
12 L

EK 9285MT-35L

320mm(D) x 700mm(H)
35 L



GPX45
225 (D) x 270 (H) mm
10L



SF40-F01
400(L) x 260 (W) x 720(H)mm
40



SF30-F01
320(L) x 265 (W) x 720(H)mm
25L



GPX-180C
305(D) x 720(H)mm
28L

GPX-110Y
380(D) x 765(H)mm
50L



PFH18 Feminine Sanitary Bin



Product Details:

- Dual operation mode
- Hand Free stepping pedal and knob on lid for customer prefers hand operation
- Ergonomic design with hand level disposal height in sitting position
- Dual purpose V-shape lid design. To minimize back flow of bad odor when lid open and block the visual of bin content
- Wide foot pedal for easy stepping
- Chemicals resistance material. Worry free with any cleaning and sanitation chemicals
- All part made from 100% virgin material to ensure durability

Specifications

Colours Available : White, Grey, Blue
 Product Size : L 185 x W 330 x H 608 (mm)
 Capacity : 18 Litre
 Material : PP



Packaging

Packing 1/3 - Cover and Lid
 Packing Size : 12 sets / carton
 Product size : 608(L) x 360(W) x 390(H)
 CBM : 0.085
 Gross weight : 4.86 kgs
 Material : Poly Propylene



Packing 2/3 - Bin
 Packing Size : 15 units / bundle
 Size : 1 bundle x 190 x 330 x 1900mm
 Gross weight : 21.75kgs
 Material : Poly Propylene



Packing 3/3 - Long Pedal and Short Pedal
 Packing Size : 12 sets / carton
 Product size : 590(L) x 178(W) x 150(H)
 CBM : 0.016
 Gross weight : 2.51 kgs
 Material : Poly Propylene



Product Display

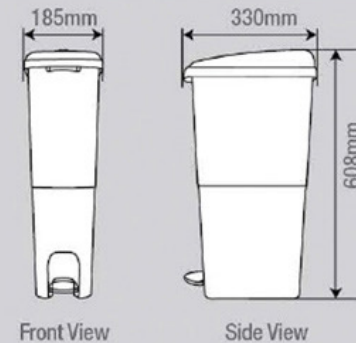


▲ White

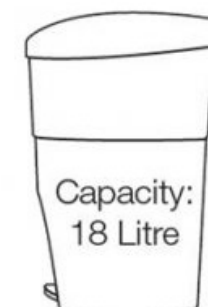
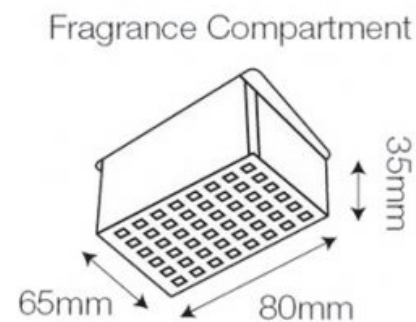
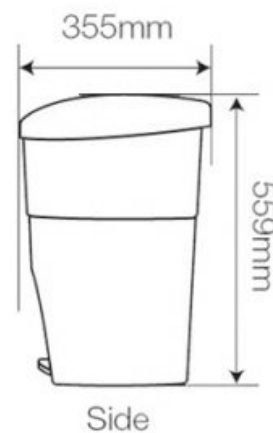
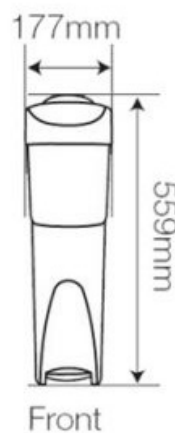
▲ Grey

▲ Blue

Product Dimensions



PFH19 Feminine Sanitary Bin



Perstorp

Stainless Steel Bins

Perstorp's modern and elegant stainless steel dustbins are made using SS304 and are polished with a hairline finishing. This bin can be used for a variety of purposes such as waste collection at shopping malls, offices, apartments, parks, healthcare facilities and even restaurants.

These bins have undergone rigorous testing hence it has good impact strength as compared to other bins in the market. It is also available in various powder coated colours and mirror finishing.

The litter bins are manufactured with the least number of parts to facilitate assembly. **Perstorp's** litter bins come in a wide range of design and can be customised in various colours to suit each customer's needs.



SS129-R
Rim Opening Cover

SS129 SERIES



SS129-R
390(D) xW 760(H) mm



All of the bins comes standard with metal inner liner with handle.

Cover Options



SS129-A



SS129-S



SS129-F



SS129-T



SS129-D

Wood Grain Finish



SS129W-D



SS129W-A



SS129W-R



SS129W-T



SS129W-S

*Powder coated cover available for all bins



SS128-D
Wood Grain Finish
with Swing Top



SS128
295(D) x 760(H) mm



SS130
500(D) x 900(H) mm



SS103
345(D) x 785(H) mm



SS127
245(D) x 760(H) mm



SS102
295(D) x 600(H) mm



SS126
245(D) x 610(H) mm

Cover Options



A - Ash Tray



F - Flat Top



S - Swing Top



Wood Grain and Powder Coating is available for all bins



D - Dome Top

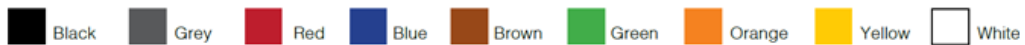


R - Rim Top



T - Top Opening

Powder Coat Colours

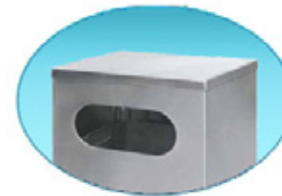


SS431-A
255(L) x 235(W) x 610(H) mm



SS432-A
400(L) x 300(W) x 760(H) mm

Options for SS41 & SS432



F
Flat Top



R
Rim Opening



SS408-RA
Rim Ash Tray Cover



SS408
345(L) x 170(W) x 660(H) mm

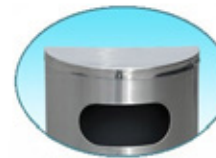


SS409
345(L) x 170(W) x 760(H) mm

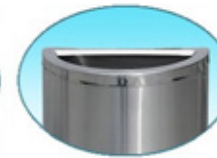


SS410
470(D) x 235(W) x 760(H) mm

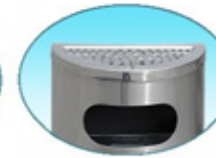
Cover Options



F
Flat Top



T
Top Opening



A
Ash Tray



RA
Rim Ash Tray



SS403-S

380(L) x 230(W) x 750(H) mm



R-Rim Opening



SS403-R

Rim Opening Cover

**SS501**

320(L) x 320(W) x 740(H) mm

**F**
Flat Top**R**
Rim Opening**SS442**

380(L) x 230(W) x 750(H) mm

**SS110**

200(L) x 200(W) x 280(H) mm

**SS107**

240(D) x 280(H) mm

**SS108**

200(D) x 280(H) mm

**SS105S**

245(D) x 300(H) mm

**SPX45**

225(D) x 270(H) mm

Outdoor Series

**SS1016**

370 (L) x 626 (W) x 1155 (H) mm
100L

**SS1009**

500 (L) x 500 (W) x 1020 (H) mm
98L

**SS1010**

450 (L) x 600 (W) x 1045 (H) mm
66L

**SS1011**

500 (L) x 500 (W) x 850 (H) mm
65L

**SS881**

500 (L) x 500 (W) x 1020 (H) mm
98L

**SS883**

450(L) x 600 (W) x 1045 (H) mm
98L

SS0 Series

**SS01**

305 (L) x 305(W) x 720(H) mm

SS02

245(L) x 245(W) x 485(H) mm

SS03

245(L) x 245(W) x 360(H) mm



The SS0 series is a specially designed bin that comes with a integrated bag holder. The covers are power coated and each edge is rounded for a stylish and modern look



SS805-PB
155 (L) x 125(W) x 1100(H) mm
* Floor Stand



WAS-823S
250(L) x 150(W) x 500(H) mm
*Wall Mounted



SS805-W
155 (L) x 125(W) x 610(H) mm
* Wall mounted



SS805-G
155 (L) x 125(W) x 610(H) mm
* Ground mounted



Umbrella Stand
S- 190(D) x 630(H) mm
L -250 (D) x750 (H) mm



Fire Extinguisher Stand
S- 190(D) x 630(H) mm
L -250 (D) x750 (H) mm

Pedal Bin Series



SSP5
205(D) x 295(H)mm
5L



SSP10
250(D) x 350(H)mm
10L



SSP22
250(D) x 450(H)mm
22L



SSP29
250(D) x 610(H)mm
29L



SSP32
300(D) x 430(H)mm
32L



SSP43
350(D) x 450(H)mm
43L



SSP56
300(D) x 785(H)mm
56L



SSP75
350(D) x 785(H)mm
75L

Perstorp

Medical Waste Bins

Progressing forward we have expanded our product line to meet the increasing demands for medical waste Bins (Clinical Bins). With the surge in COVID-19 cases globally. There is no denying that waste collectors are in dire need to step up their ability to deal with the influx of medical waste.

In order to tackle the issue, we had to come up with products that were ergonomically efficient at handling these dangerous biohazard elements. For example these bins are used in hospitals, clinics, quarantine centres and healthcare centres.

Most Importantly the governing body requires that these bins to be in bright yellow colour. Clearly labelled with the Biohazard logo as well SW 404 markings.





Lokcs with master key are installed on the MGB240M-WL to ensure no spillage during transportation



Custom markings for waste collectors to track weight and dates.

MGB Medical Waste Bins

MGB240MW/MWL

The MGB240MWL Clinical Waste Bin is a variance of the popular MGB240 which is specially designed to handle bio hazard waste. The bin come with two locks which ensures that content will be safely secured during transportation and keeping hazardous waste safe within the bin.

The bins are manufactured using the highest quality HDPE and is made in accordance to DIN 30740 and EN840. Logos and text on the bins can be customised accordingly to suit the customers needs

Injection moulded HD-Polyethylene,
UV-Stabilized for outdoor use.

Wheels:

Hub: Injection moulded Polyethylene
Tyre: Vulcanised rubber
Axle: Galvanised Steel

Temperature Range: -40°C to + 80°C
Max Load: 98 kg

Width	575
Length	720
Height	1070
Weight (kg)	12±2%
Volume (litres)	240



MGB660MW

660 Litre wheel bin version for biohazard waste.

Optional: **MGB660MWL** with master key locks

Width	915
Length	1340
Height	1260
Weight (kg)	41±2%
Volume (litres)	660



MGB120MW

The 120 litre wheel bin varianty with standard biohazard markings.

Width	456
Length	553
Height	930
Weight (kg)	8±2%
Volume (litres)	120

MGB240SSP



240 Litre wheel bin with stainless steel pedal and biohazard markings

Width	580
Length	740
Height	1100
Weight (kg)	12±2%
Volume (litres)	240



Smooth pedal operation to open lid for waste disposal



Heavy duty stainless steel pedal for long life and easy cleaning



Pedal Bins

MWSP18/SP18



Capacity : 18L

Size : 395(W) x 420 (H) mm
Colour: Yellow or Grey



MWSP10/SP10



Capacity : 10L

Size : 330(W) x 315(H) mm
Colour: Yellow or Grey



PSO Pedal Bin Series

PSO30MW

Capacity : 30 Litre
Dimension: 410(L) x 398(W) x
435(H) mm

PSO45MW

Capacity : 45 Litre
Dimension: 398 (L) x 410 (W) x
600 (H) mm

PSO68MW

Capacity : 68 Litre
Dimension: 412 (L) x 504 (W) x
673 (H) mm

PSO87MW

Capacity : 87 Litre
Dimension: 500(L) x 410(W) x
820(H) mm



MWRP Pedal Bin Series

**MWRP12**

Capacity : 12 Litre

Dimension: 230(W) x 295(L) x 375(H)
mm

MWRP15

Capacity : 15 Litre

Dimension: 230(W) x 295(L) 450(H)
mm

MWRP30

Capacity : 30 Litre

Dimension: 290(W) x 360(L) 530(H)
mm

MWRP40

Capacity : 40 Litre

Dimension: 290(W) x 360(L) 705 (H)
mm

Sharp Bins Series

**MWSB2.5**

Capacity : 2.5 Litre
Size : 180 (D) x 180(H) mm
Weight: 0.297kg

MWSB5

Capacity : 5 Litre
Size : 225 (D) x 225(H) mm
Weight: 0.441kg

MWSB10

Capacity : 10 Litre
Size : 267(D) x 255(H) mm
Weight: 0.534

MWSB20

Capacity : 20 Litre
Size : 300(D) x 365(H) mm
Weight: 0.804kg



Large opening for easy disposal of needles and other sharp clinical wastes.



Ergonomical handle for easy handling and transportation of bins.



Easy stackability for all sizes, for safety and efficient transportation

Ciri-ciri Keselamatan / Safety Features

Semua Bekas Sisa Tajam Ini dibuat untuk perlindungan keselamatan & kesihatan.
All Sharps Containers are built to safeguard health and hygiene.

Penutup Apertur Kalis Bocor
Leakproof Aperture Cover

Penutup Mudah Ditekan-Tutup Dengan Hanya Berat Badan
Easy Body-Weight Push-Lock Cover

Apertur Kalis Kebocoran
Pillproof Aperture

Sistem Penutup Anti-Bocor
3 Langkah Penguncian
Tri Ribbed Anti-Leak Locking System

Tepi Penutup Berling-cantuman Agar Kukuh Bila Ditingkatkan
Interlocking Base of Cover for Firm Stacking

Pemegang Yang Tak Menghalang Pergerakan
Non-Obstructive Handles

Untuk menutup sementara, tekan secara perlahan di bulatan diatas penutup Apertur sehingga terdengar bunyi "klik"

Press Here For Temporary Lock

Untuk menutup sementara, tekan secara perlahan di bulatan diatas penutup Apertur sehingga terdengar bunyi "klik"

For temporary lock, gently press the circle on the top of the Aperture cover until you hear "click" sound

Apabila isian telah sampai ke had penuh
When contents filled to mark
a) Tutup dan kuncikan penutup Apertur sepenuhnya
Fully close and lock Aperture cover

i) dengan menekan kuat bulatan pada tutup Apertur sampai bunyi "klik" terdengar di dalam bin
ii) menekan kuat dengan kedua-dua belah tangan di point yang pertama
iii) menekan kuat dengan kedua-dua belah tangan di point yang ke-2
iv) menekan kuat dengan kedua-dua belah tangan di point yang ke-3 untuk penutupan kekal yang sempurna, and by pressing hard at the point 3 for perfect permanent lock.

Others



Trocar Medical Waste Bin



Mobile Sharp Bin Holder



Trolley Sharp Bins Mounts



Clinical Waste Bags



Mobile Medical Waste Bin



Wall Mounted Sharp Bin Holder



Queue Up Stands and Signages

Perstorp's queue up stands are made using stainless steel to ensure long product life and easability to clean. Focused on making managing crowds a breeze. Belts can be customised in various colours and special wording and logos can be printed too.

Manufactured with the highest quality standards in stainless steel. They provide functional and design solutions, for the selective collection of different types of situation.

These stands and signages are manufactured with the least number of parts to facilitate assembly.



**SSQ-001**

Pole 65 (D) x Base 320 (D) x 910(H) mm

Belt: 2000mm

**SSQ-003**

Pole 50(D) x Base 320 (D) 1010 (H) mm

**SSQ-002**

Pole 65 (D) x Base 360(D) 880(H) mm

Belt: 2000mm

**SSQ-001B**

Pole 65 (D) x Base 320 (D) x 910(H) mm

Belt: 2000mm

**SSQ-001G**

Pole 65 (D) x Base 320 (D) x 910(H) mm

Belt: 2000mm

**SSQ-003G**

Pole 50(D) x Base 320 (D) 1010 (H) mm

**SSQ-002G**

Pole 63.50 (D) x Base 360 (D) x 910(H) mm

Belt: 2000mm
Weight: ±6.8 kg**SSQ-002B**

Pole 63.50 (D) x Base 360 (D) x 910(H) mm

Belt: 2000mm
Weight: ±6.8 kg

Accessories & Options



Velvet rope options for SSQ-003



WMWB-202 Wall Mounted
Belt: 2000mm

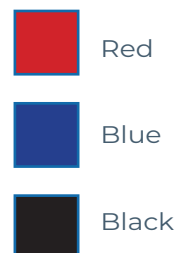


WMRB-201 Wall Mounted
Belt: 3000mm



Custom wording or logo printing is available

Retractable Belt Colour Options



Slip in Frame for Queue Up Stand

**SSIF – A4L**

– Size A4 – 210mm x 297mm

SSIF – A4P

– Size A4 – 297mm x 210mm

SSIF – A3L

– Size A3 – 297mm x 420 mm

SSIF – A3P

– Size A3 – 420 mm x 297mm



Signage Stands



SSD – A4L

- Pole : 50mm
- Base : 320mm
- Height : 1170mm

SSD – A4P

- Pole : 50mm
- Base : 320mm
- Height : 1260mm

SSD – A3L

- Pole : 50mm
- Base : 320mm
- Height : 1220mm

SSD – A3P

- Pole : 50mm
- Base : 320mm
- Height : 1340mm

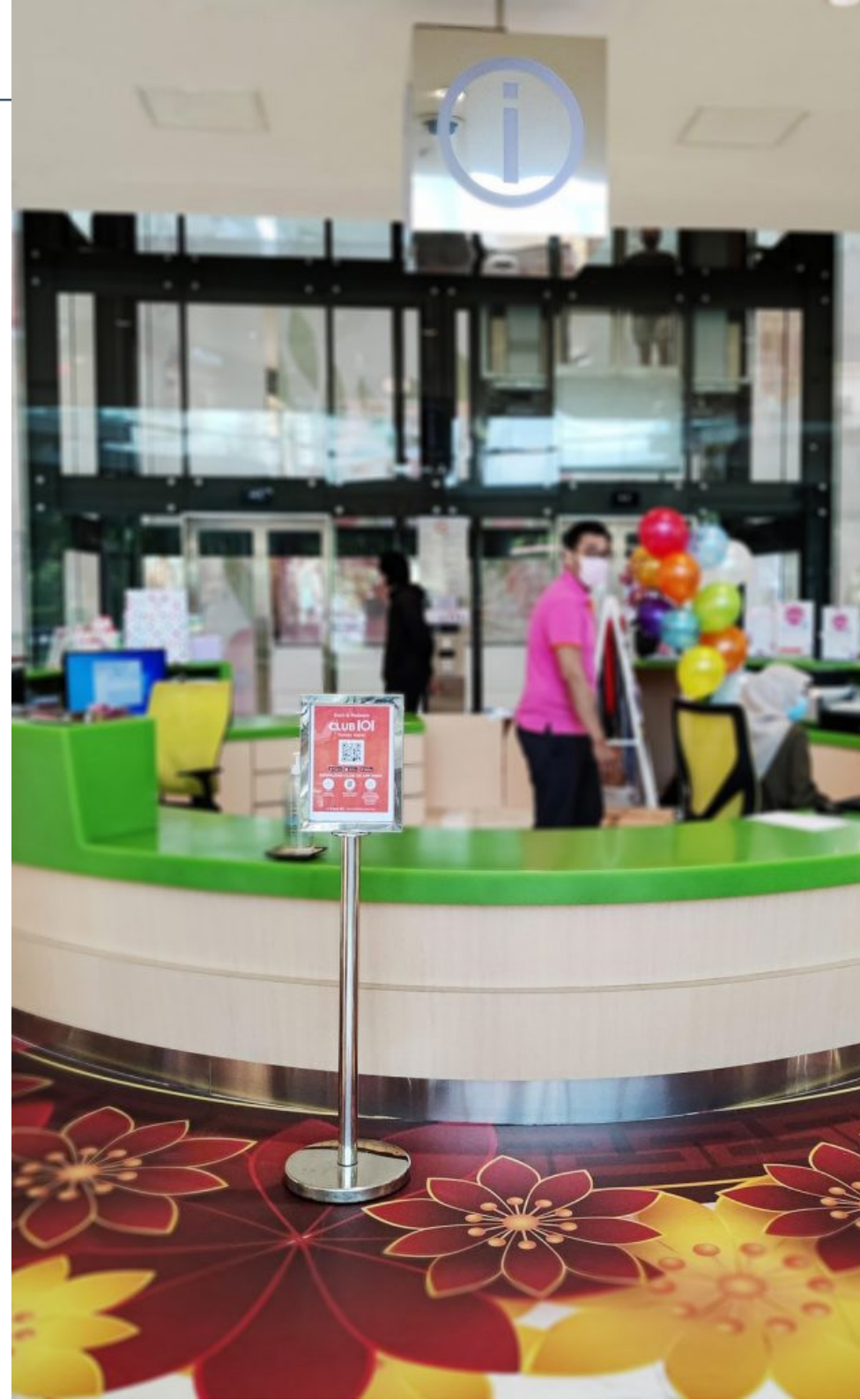
Colour Options



Black



Gold



Signboard Stands



SSA1 - A1 Single Face Stand
630mm x 1110mm



SSA1D - A1 Double Face Sign
630mm x 1110mm



SSD360-A3 360°
SSD360-A4 360°
850mm x 1350mm (Adjustable)

Tissue Dispensers



Jumbo Roll Tissue Dispenser



Paper Towel Dispenser



Center Pull Tissue Dispenser



Jumbo Roll Tissue Dispenser



M-Fold Tissue Paper



Center Flow Tissue

Hand Dryers



Stainless Steel Hand Dryer
H5102/SS



V Aero Hand Dryer (White)
HSA1011



V Aero Hand Dryer (Chrome)
HSA1011

Stainless Steel Soap Dispenser



Vertical Soap Dispenser

1200ml
125(L) x 50(W) x 250(H) mm



Vertical Soap Dispenser

500ml
95(L) x 55(W) x 170(H) mm



Horizontal Soap Dispenser

1200ml
203(L) x 55(W) x 130(H) mm



Foam Soap Dispenser

1200ml
70(W) x 127(L) x 200(H) mm



Hand Sanitizer Dispenser 800
800ml



P75 - Hand Sanitizer

- 500ml Pump Bottle
- 5000ml Bottle

1. Non-rinse Moisturising Hand Sanitizer
2. Proven to kill 99.99% of harmful bacteria and viruses
3. Liquid-based hand sanitizer prevent stickiness
4. Protects skin formulation
5. WHO recommended formulation
6. Gentle to skin
7. AKIM Approved



Hand Sanitizer Pump Bottle Dispenser (Wall Mounted)
300ml

Perstorp

Leach Bins

Perstorp's leach bins are designed to be durable and tough. As these bins are normally exposed to the harsh environments and are usually deployed in more rural areas.

Using thick metal sheets and sturdy metal beams and solid wheels to ensure a long product life and easy servcability.

Available in a wide range of colours, we offer a complete series of accessories in order to cover any issue that may arise during waste collection. These parts can be easily installed by the user.

All the Leach Bins can be customised with a series of options in order to enhance the tracking, identification and logistics by the waste collectors.





LB1500 Metal Leach Bin
1980 (L) x 1340 (W) x 1150 (H) mm
1500L



LB1100 Plastic Leach Bin with Metal Frame
1955(L) x 1372 (W) x 1143 (H) mm
1100L





Roll-On Roll-Off (RORO)

Perstorp's Roll-On Roll-Off (RORO) bins are perfect for the removal of large amounts of bulky waste. In addition the fully opening rear doors make disposing of materials from commercial and industrial clients, such as building sites and other large scale operations, easy and hassle-free.

****** NO liquids (including paint) or chemicals and flammable or explosive items such as batteries or gas bottles are to be placed in the bin.



Dimensions

Model	Dimensions	Thickness
RORO-1262	12' (L) x 6' (W) x 2' (H)	3 mm
RORO-1264	12' (L) x 6' (W) x 4' (H)	3 mm
RORO-1265	12' (L) x 6' (W) x 5' (H)	3 mm
RORO-1271.5	12' (L) x 7' (W) x 1.5' (H)	3 mm
RORO-1284	12' (L) x 8' (W) x 4' (H)	3 mm
RORO-1475	14' (L) x 7' (W) x 5' (H)	3 mm
RORO-1484	14' (L) x 8' (W) x 4' (H)	3 mm
RORO-15.585	15.5' (L) x 8' (W) x 5' (H)	3 mm
RORO-1684.5	16' (L) x 8' (W) x 4.5' (H)	3 mm
RORO-17.588	17.5' (L) x 8' (W) x 8' (H)	3 mm
RORO-1786	17' (L) x 8' (W) x 6' (H)	3 mm
RORO-1884	18' (L) x 8' (W) x 4' (H)	3 mm
RORO-1886	18' (L) x 8' (W) x 6' (H)	3 mm
RORO-2084	20' (L) x 8' (W) x 4' (H)	3 mm
RORO-2087	20' (L) x 8' (W) x 7' (H)	Wall: 4 mm, Floor: 6 mm

*Other sizes of RORO bins are available, as we specialise in custom made bins. Kindly speak to our sales team for more information.

Specifications

- Plate used: between 2.5 mm to 4 mm depending on the model
- Full Anti Rust & Spray

Part	Measurements
Base Frame & Hook Side	'C' Channel – 2 x 4 (4 mm)
Base Bottom Centre	'C' Channel – 1 ½ x 3 (4 mm)
Door Frame	Hollow – 2 x 3 (1.9 mm)
	Hollow – 2 x 2 (1.9 mm)
Base	'C' Channel – 2 ½ x 5 (5 mm)





**Perstorp Sdn.Bhd**

14 Jalan 9/7, Seksyen 9,
43650, Bandar Baru Bangi,
Selangor Darul Ehsan,
Malaysia.

+603 8926 1301 / +603 8923 1301

+603 8925 1344

+6017-3856801

info@perstorp.my



Perstorp